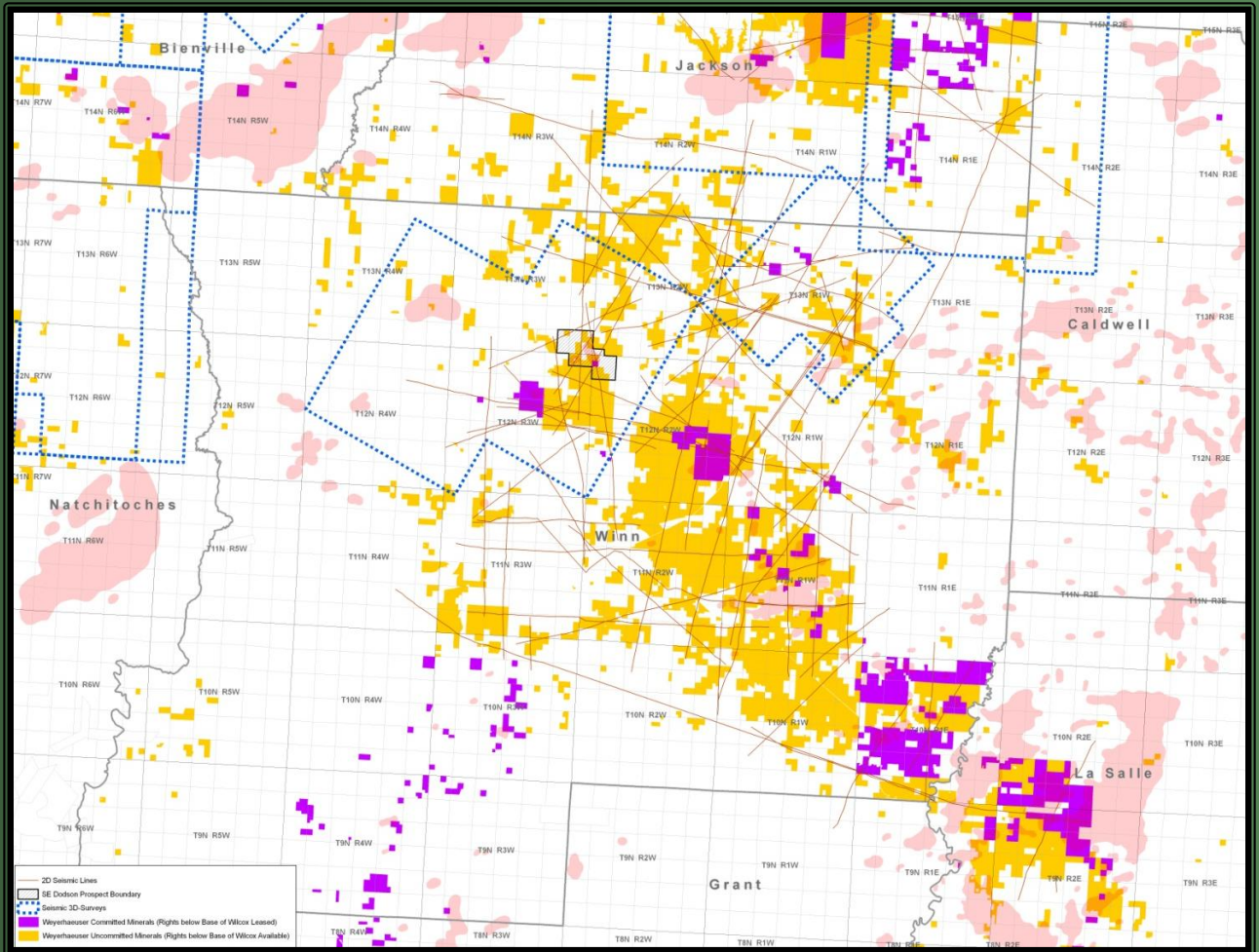




North Louisiana Cretaceous & Jurassic Oil/Gas Trends Winn & LaSalle Parishes, Louisiana > 100,000 Acre Exploration Block



Weyerhaeuser Assets:

- 100,000 acres
- 164 sq. miles of 3D seismic data
- 900 miles of reprocessed 2D seismic data

Weyerhaeuser is soliciting lease/option offers for available acreage.

This information is not intended to be and should not be interpreted to be an exclusive offer to your company. Unless and until an Option/Lease Agreement or binding letter of intent has been executed between your company and Weyerhaeuser, neither your company nor Weyerhaeuser will be under any legal obligation whatsoever to conclude a transaction. Weyerhaeuser reserves the right, at its sole discretion, to reject any and all offers and to terminate discussions concerning a potential transaction at any time without liability or obligation of any nature whatsoever.

Contact: Pamela J. Reed, Land Manager, at (253) 924-2212 or Larry M. Dunn, Sr. Staff Landman, at (253) 924-2050

Executive Summary – N. Louisiana Cretaceous & Jurassic Trends

- Play Concepts:** Onlapping intra-salt clastic wedges (stratigraphic traps), downthrown growth fault traps adjacent to salt-cored anticlines and diapirs, shallow--water carbonate buildups, channel and slope sandstones.
- Drill Depth:** 5,000' – 25,000' Ptd
- Reserve Potential:** Oil and Gas with Multiple TCFGE
- Primary Reservoirs:** Jurassic sandstones (Calvin, Cotton Valley & Bossier) & carbonates (Knowles) L. Cretaceous sandstones (Hosston) & carbonates (Mooringsport, Rodessa & Sligo)
- Secondary Reservoirs:** U. & L. Cretaceous sandstones (Tuscaloosa, Glenn Rose, Mooringsport) and carbonates (Annona Chalk, James lime).
- Productive Analogs:**

Weyerhaeuser's mineral block in Jackson, LaSalle and Winn Parishes is within the producing Cretaceous – Jurassic trends in N. Louisiana. On the northern edge of the mineral block, at Vernon Field, Bossier Sandstones have produced over 500 BCFG with recoverable reserves estimated to be over 2.2 TCFG. Hosston channel sandstones have produced large volumes of gas at Chatham/Clear Branch (109 BCFG), Vixen (198 BCFG) and Cotton Plant (74 BCFG) fields with recoveries ranging from 6 – 13 BCFG per well. The Sligo Formation has produced over 64 MMBO and nearly 1 TCFG at Black Lake Field just west of the mineral block. Additional productive units in the area include the James, Rodessa, U. Cotton Valley sandstones and Knowles limestone.